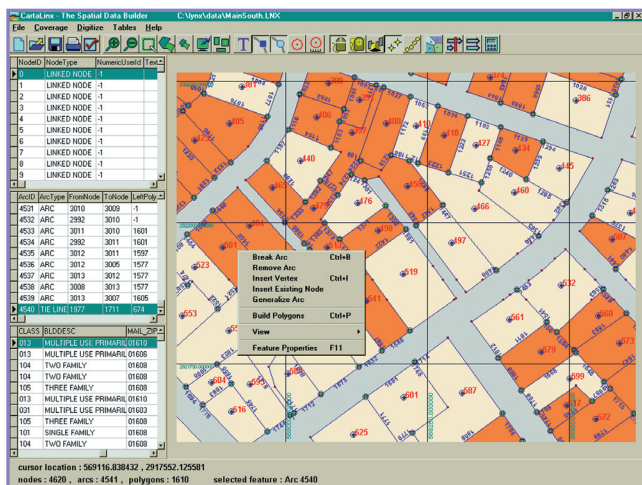
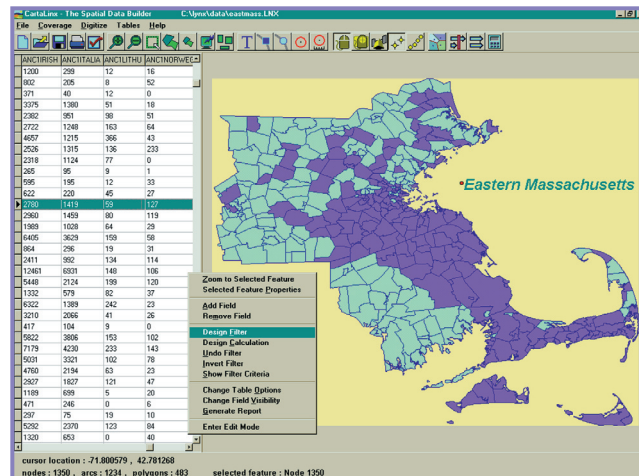


CartaLinX is a spatial database development and topological editing tool that can be used with various GIS software products such as IDRISI[®], ArcGIS[®] and MapInfo[®].

Overview

CartaLinX is used to create, manipulate and build topology of vector coverages and associated attribute values files. The data are then typically exported to a GIS either as entire coverages or as a series of map layers.

CartaLinX flexibly allows for data entry from a variety of sources, including the use of a mouse as a coordinate input device, CoGo bearing and distance measurements, and any GPS device capable of outputting NMEA1 format data records over an RS-232 cable connection. Over 500 digitizing tablets are supported through the Virtual Tablet Interface™, sold separately.



Features

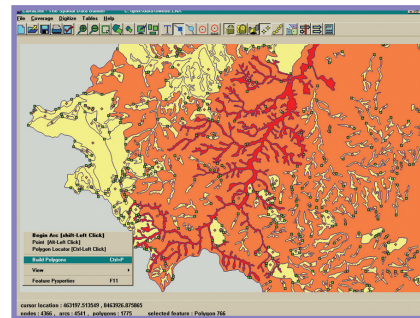
CartaLinX uses a full topological editor/digitizing system with capabilities for automatically building vector topology (connectivity between nodes, arcs and polygons); automated generation of polygons and assignment of ID's by means of polygon locators (label points); insertion, deletion or movement of nodes, arcs or arc vertices; real-time projection/datum transformation of digitizer and GPS input data to meet mapping reference system specifications; and feature filtering and extraction to new spatial databases based on feature attributes (filter) or location (clip).

CartaLinX also has significant analytical and mapping capabilities, including relational database query support, producing custom maps based on specific feature attributes; support for mathematical modeling, creating new derivative data fields using mathematical operations on existing fields; interactive feature inquiry, instantly displaying attribute data for any feature by simply clicking on that feature; real-time route monitoring using GPS with an image backdrop; and text placement with scale-sensitive sizing.

Contact Us

Clark Labs, Clark University
950 Main Street Worcester, MA
01610-1477 USA

Tel: +1.508.793.7526
Fax: +1.508.793.8842
Email: clarklabs@clarku.edu
Web: www.clarklabs.org



- 32-bit topological data structure.
- Real-time GPS interface for feature digitizing.
- CoGo bearing and distance input.
- Works with over 500 digitizing tablets with a VTI (may be purchased for only \$45).
- Supports 24-bit georeferenced image backdrops.
- Uses the Access™ database engine with filter and calculate operations.
- Full geodetic projection and datum transformation-over 400 reference systems supplied including all US UTM and State Plane zones.
- CartaLinX is designed for use with Microsoft® Windows NT®, Windows 2000® or Windows XP operating systems.

CartaLinX is a registered trademark of Clark University. ArcGIS is a registered trademark of ESRI, Inc. MapInfo is a registered trademark of MapInfo Corporation. Access and Windows are registered trademarks of Microsoft Corporation. VTI is a trademark of Digitizer Technology Company.

